

CHRISTMAS CARD PROJECT

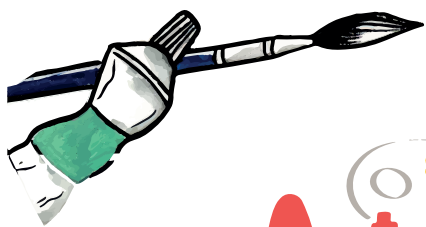
CLASS TEACHER GUIDE

- 1 Create artworks in class on A4 size paper or card and please follow the Artwork Guidelines.
- 2 Once the artworks are complete (and are dry, if using paint, etc.), complete a unique artwork label with the child's name and class, stick a label onto the reverse of every artwork with the arrows indicating the top of the artwork. **Please DO NOT photocopy artwork labels.**
- 3 Place your artworks into the class envelope for the organiser to collect for submission to APFS for scanning on the agreed date.
- 4 Once artworks are returned to you, after scanning, please send home immediately, along with one of the supplied leaflets. Families can then personalise their cards and place their orders online by visiting www.apfsorders.co.uk Please make them aware of the shop deadline date, which you should find written on the front of your class envelope.
- 5 All completed orders will be returned to school, for distribution to families.

ARTWORK GUIDELINES FOR BEST RESULTS

See overleaf for examples

- Artworks should be created on white or coloured paper/card and must be A4 in size (210mm x 297mm). Please avoid using black paper/card and any with a glossy/shiny finish.
- We recommend using good quality paper, as a guide if you can see through it, it's too thin!
- Designs can be portrait or landscape. Fill the whole page for the best effect when printed. Please ensure that important parts of the artwork, such as any writing is kept away from the edges.
- Encourage bold, bright colours, best techniques could involve paint, collage or batik.
- Pencil drawings do not reproduce well and are often not visible when printed, so please do not create drawings using pencils. We can not improve the quality of the drawings and therefore do not offer re-prints or refunds.
- Collage artworks (maximum depth 5mm) look very effective when printed. A wide range of materials can be used, such as tissue paper, cotton wool and fabric, please make sure they are securely fixed. Please do not use glitter or shiny items.
- Do not use images which have been reproduced using a photocopier or printer as these will show reflection or print lines, resulting in disappointing printed items. If using photos, ensure they are not a glossy finish.



Art
projects
for schools



SCAN ME FOR
ART IDEAS AND
TECHNIQUES



01227 262417

info@apfs.org.uk

apfs.org.uk



CHRISTMAS CARD PROJECT

ARTWORK TIPS FOR BEST RESULTS

USE BOLD BRIGHT COLOURS

The brighter the better, these will print most effectively. Use coloured paper/card for good background colour too.



PLEASE DO NOT USE PENCILS OR CRAYONS AND BE CAREFUL OF THE EDGES!

FILL THE WHOLE PAGE

We print the whole A4 page, so please avoid tiny drawings on just one part of the paper as these will print with a lot of empty space around them.



BE CAREFUL OF THE EDGES

Keep any important words and details away from the edges as 2-3mm are trimmed off when printed.



COLLAGE LOOKS VERY EFFECTIVE

Use a wide range of art materials to create artworks. Please stick items on securely.



SCAN ME FOR ART IDEAS AND TECHNIQUES

