



# Painted Shapes

Look at colour and shape while practising painting on fabric.

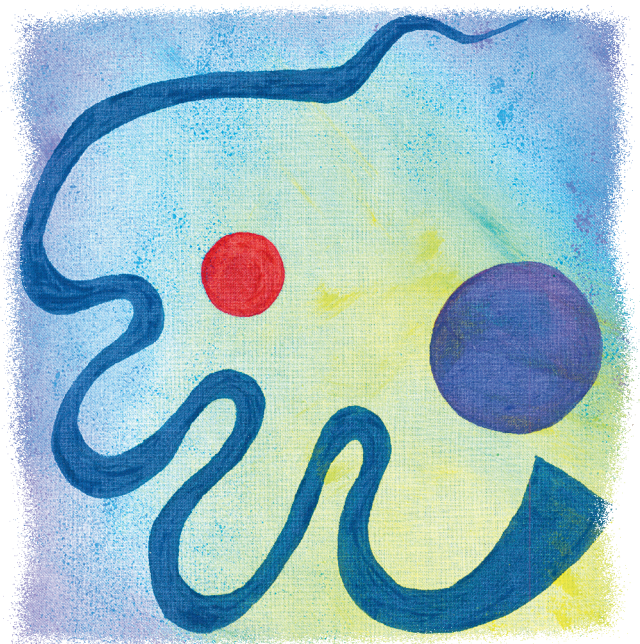
## Method

- Make sure that fabric is ironed and wrinkle-free.
- Look at Klimt's paintings and pick out 3 shapes that particularly appeal.
- Look at the backgrounds of the paintings and see how the colours blend and change across each one.
- Mark out a rectangle on the fabric with masking tape making sure that it is firmly stuck down.
- Dab the sponge into the first chosen colour and drag it across the fabric working from the tape and into the middle.
- Continue to sponge paint onto the background making sure that each new colour has a fresh sponge to avoid contaminating colours.
- Dab, dab, dab the sponge across the areas where colours meet to help them blend smoothly together. Leave to dry.
- Lightly draw the chosen shapes onto the background with a pencil.
- Fill in each shape with fabric paint – make repeated short brushstrokes so that the paint covers the uneven surface of the fabric. Make sure that the brush is well loaded when painting the smooth edges of each shape.
- If light colours don't cover the background colour well enough allow to dry then add a second coat.
- If some of the painted edges are a bit too ragged then neaten up by drawing round the shapes with a matching colour fabric pen.

When everything is finished, peel off the masking tape to reveal perfectly straight edges.

## Materials

Calico or other firm cotton fabric.  
 Images/postcards of Klimt paintings.  
 Masking tape.  
 Fabric paints.  
 Flat inking tray.  
 Sponge.  
 Paint brush.  
 Pencil.  
 Water in pot.  
 Fabric pens (optional).



## Taking it Further

Work collaboratively by dividing a Klimt painting into sections – each child paints a section then the pieces are stitched together to recreate the original. Make a banner using shapes and patterns from Klimt's work, painting on to fabric and working in groups. Try experimenting with other media on fabric e.g. oil pastels, crayons and marker pens.

Klimt is known for his use of pattern and shape. Isolating a few shapes in this way enables children to extend their ability to work with textiles but avoids them becoming overwhelmed by the artist's work. It is important that the children's work is informed by the artist rather than attempting a direct copy.